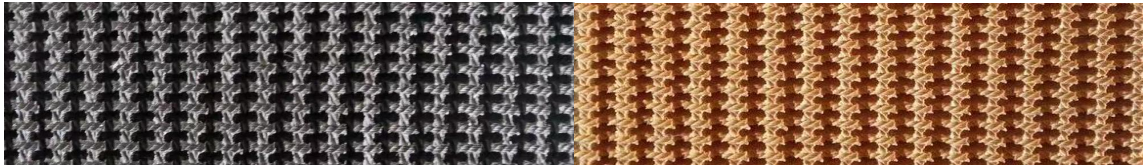


Rough-top Belt



Standard Specifications:	Width (in)			Length (ft)
EP 250/2P RT + 0	48"	60"	72"	656
EP 400/3P RT + 0	48"	60"	72"	656
EP 500/3P RT + 0	48"	60"	72"	656
EP 250/2P RT + 1.5	48"	60"	72"	656
EP 400/3P RT + 1.5	48"	60"	72"	656
EP 500/3P RT + 1.5	48"	60"	72"	656

Standard Cover Grade:	Tensile Strength (MPa)	Abrasion (mm ³)
RMA G1	≥ 17	-
RMA G2	≥ 14	-
RMA G1 + A	≥ 17	≤ 150
RMA G2 + A	≥ 14	≤ 150

Key characteristics:

- ✓ Increased grip for inclined applications
- ✓ Improved shock-absorption

Close-up of rough-top pattern

